



The
J.J. Ugland
Companies
Ugland Construction

UR 901



- Length: 91,4 m | Beam: 27,4 m
- Deck area of 2 508 m²
- High deck strength of 30 t/m²
- 1200 m³/h ballasting capacity
- BWTS IMO & USCG approved
- DNV Class & Norwegian Flag

Ugland Construction AS

Haakon VII's gt. 8

4005 Stavanger

Norway

+47 51 56 43 00

uc@jjuc.no

www.uglandconstruction.no



General Data

Year Built	2013
Class	DNV
Call Sign	LG7251
Builder	Dalian Shipyard
Owner	Ugland Barge Shipping AS

Dimensions

Length, overall	91.440 m
Breadth, moulded	27.430 m
Depth, moulded	6.096 m
Draught, fully loaded	4.840 m
Web Frame Spacing	2.286 m
Gross Tonnage	4065 t
Net Tonnage	1220 t

Capacity

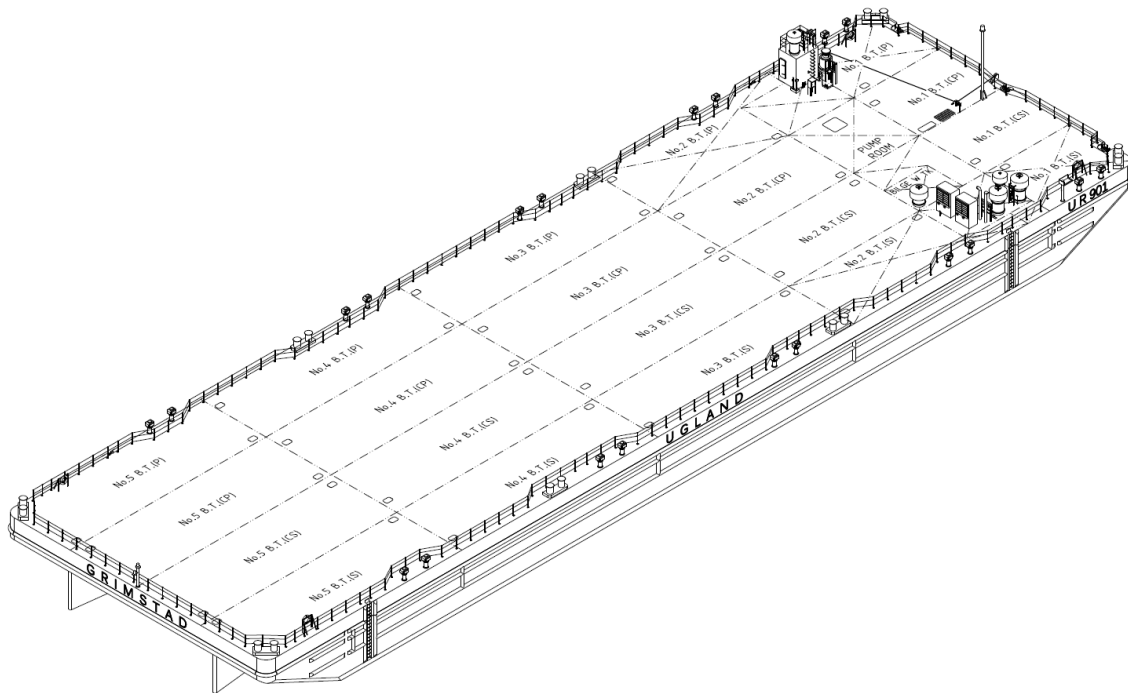
Deadweight	9019 t
Lightship	2457 t
Deck Space	2508 m ²
Deck Strength	30 t/ m ²
Long. Bulkhead/ Side shell and Transv. Frames	700 t
Long. Bulkhead/ Side shell and Transv. Bulkheads	200 t
Mid on Transv. Frames	240 t
Mid on Transv. Bulkheads	100 t

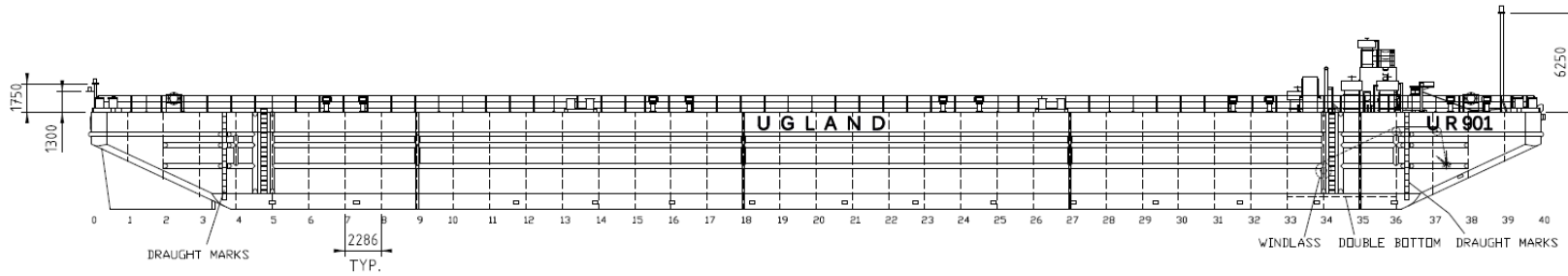
Mooring/ Towing/ Fendering Arrangement

Anchor Wire	610 m, dia. 38 mm
Anchor Winch	1x Hydraulic Mooring Winch
Anchor	<i>For Emergency Only</i> 1x Pool Anchor (4050 kg)
Towing Arr.	Smit towing arrangement for main and emergency SWL 85 t
Towing Bridle	Chain/wire with triangle plate SWL 85t
Fendering	3 tiers of horizontal steel fenders on each side 2 double tiers of vertical steel fenders on each side of ladders 5 vertical steel fenders on each side
Bollards	On Deck (8 pcs. - 50T SWL)

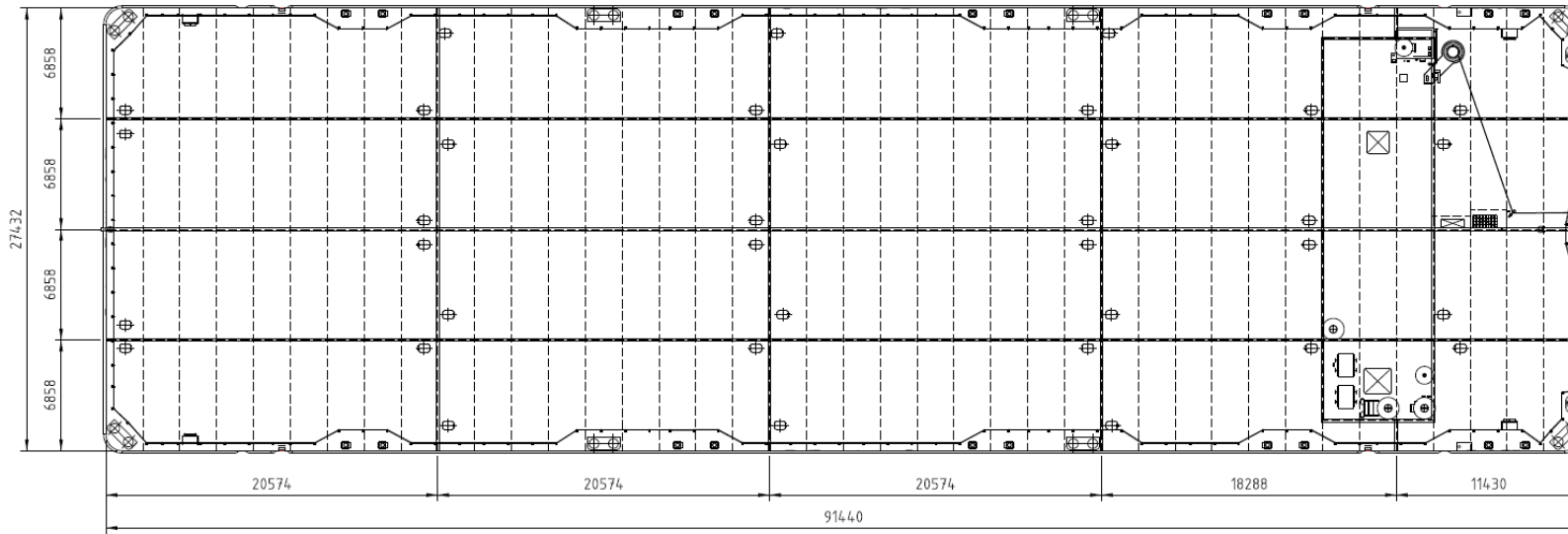
Equipment

Ballast Pumps (Electrical Driven)	2x 600 m ³
Ballast Tanks	20
Ballast Water Treatment System	Filtration + UV
Alternator	350 KVA, Diesel Driven Engine
Auxiliaries	2x Air Cooled Diesel Engines
Anchor Winch	1x Hydraulic Mooring Winch
Lights	Solar Powered Navigation Lights Electric Lights in Pump Room Shore Connection and Battery Charger





SIDE VIEW



PLAN VIEW

