

The
J.J. Ugland
Companies
Ugland Construction

UR 171



- Length: 100,6 m | Beam: 33,5 m
- Deck area of 3 239 m²
- Deck strength of 25 t/m²
- 2000 m³/h ballasting capacity
- BWTS IMO & USCG approved
- DNV Class & Norwegian Flag

Ugland Construction AS
Haakon VII's gt. 8
4005 Stavanger
Norway

+47 51 56 43 00
uc@jjuc.no
www.uglandconstruction.no



General Data

Year Built	2011
Class	American Bureau of Shipping (ABS)
Call Sign	LG6457
Builder	Nantong Tongde Shipbuilding & Repair CO.
Owner	Ugland Barge Shipping AS

Dimensions

Length, overall	100.584 m
Breadth, moulded	33.528 m
Depth, moulded	7.620 m
Draught, fully loaded	6.086 m
Web Frame Spacing	2.300 m
Gross Tonnage	6969 t
Net Tonnage	2090 t

Capacity

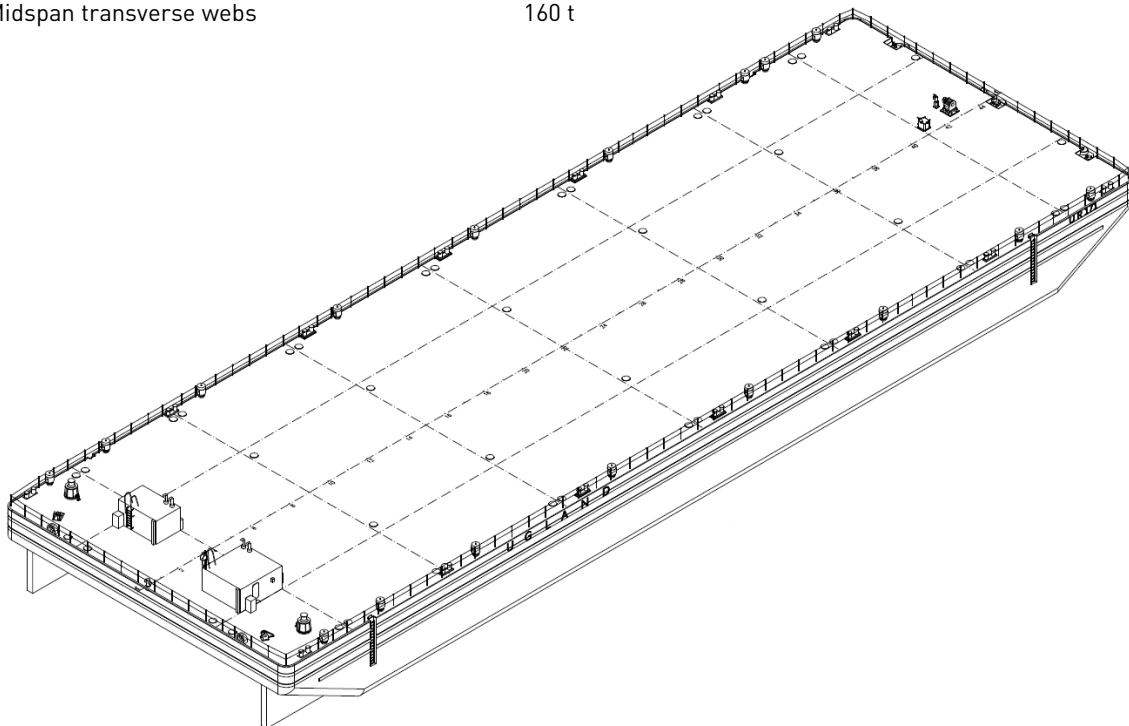
Deadweight	16214 t
Lightship	3316 t
Deck Space	3239 m ²
Deck Strength	25 t/ m ²
Crossing point of bulkheads	435 t
Crossing point of long. Bulkheads and transv. webs	260 t
Midspan transverse webs	160 t

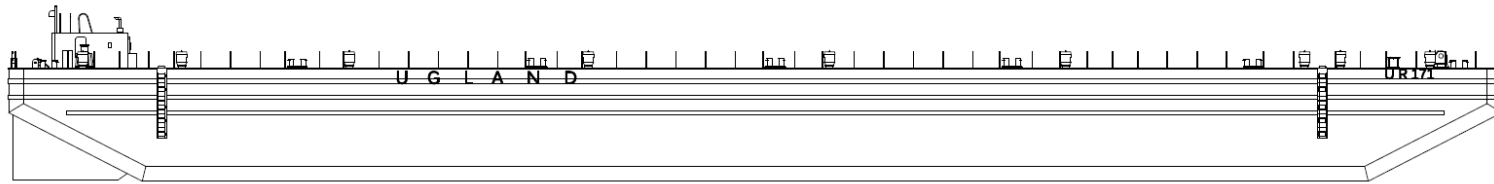
Mooring/ Towing/ Fendering Arrangement

Anchor Wire	120 m, dia. 44 mm
Anchor Winch	1x Hydraulic Mooring Winch
Anchor	<i>For Emergency Only</i> Stockless Bower (5500 kg) 3 recessed Smit brackets
Towing Arr.	Two for main bridle One for emergency
Towing Bridle	Chain/wire with triangle plate SWL 120t
Fendering	20 rubber tyres installed by chain from deck, each side
Bollards	On Deck (14 pcs. – 39T SWL)

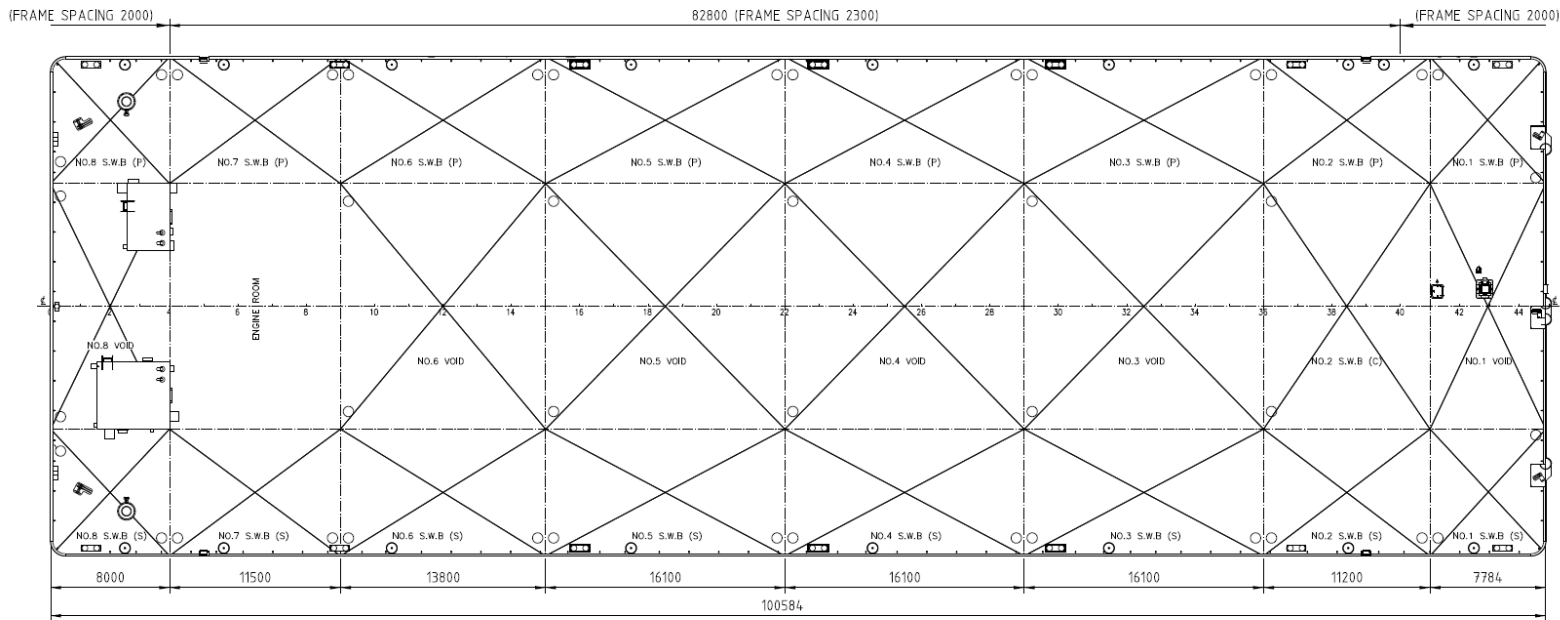
Equipment

Ballast Pumps (Diesel Driven)	2x 1000 m ³
Ballast Tanks	17
Ballast Water Treatment System	Filter + Chemical Disinfection
Alternator	32 kW, Diesel Driven Engine
Auxiliaries	2x Water Cooled Diesel Engines
Anchor Winch	1x Hydraulic Mooring Winch
Lights	Solar Powered Navigation Lights Electric Lights in Pump Room Shore Connection and Battery Charger





SIDE VIEW



PLAN VIEW

