

The
J.J. Ugland
Companies
Ugland Construction

UR 141



- Length: 91,7 m | Beam: 30,5 m
- Deck area of 2 787 m²
- Deck strength of 15 t/m²
- 2000 m³/h ballasting capacity
- BWTS IMO & USCG approved
- DNV Class & Norwegian Flag

Ugland Construction AS
Haakon VII's gt. 8
4005 Stavanger
Norway

+47 51 56 43 00
uc@jjuc.no
www.uglandconstruction.no



General Data

Year Built	1993
Class	DNV
Call Sign	LK4833
IMO Number	9065352
Builder	Lindenau GmbH
Owner	Ugland Barge Shipping AS

Dimensions

Length, overall	91.710 m
Breadth, moulded	30.480 m
Depth, moulded	7.620 m
Draught, fully loaded	6.164 m
Web Frame Spacing	2.300 m
Gross Tonnage	5690 t
Net Tonnage	1213 t

Capacity

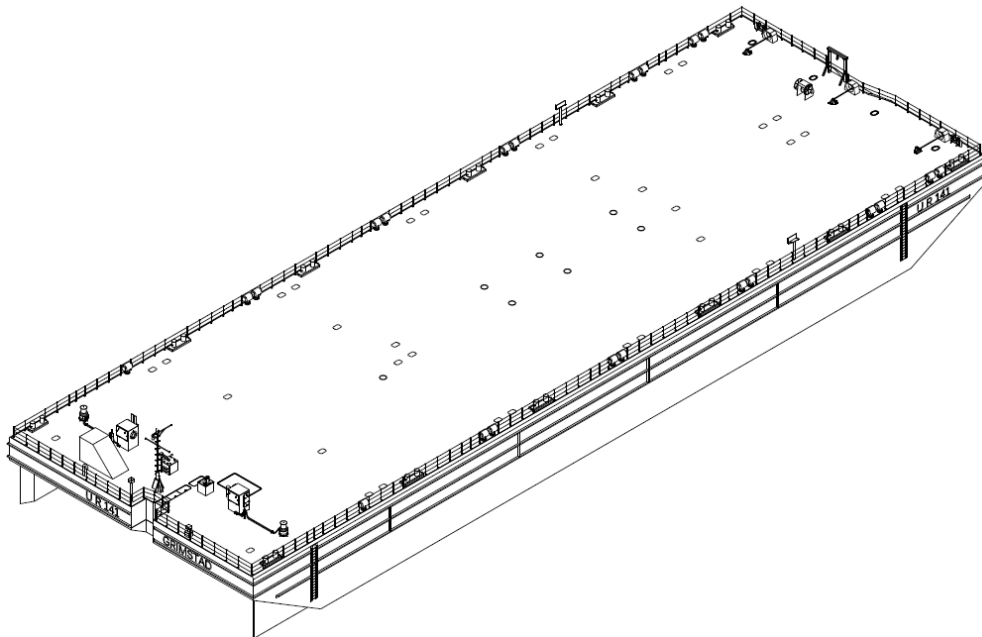
Deadweight	14011 t
Lightship	2225 t
Deck Space	2787 m ²
Deck Strength	15 t/ m ²
Crossing point of bulkheads	435 t
Crossing point of long. Bulkheads and transv. webs	260 t
Midspan transverse webs	160 t

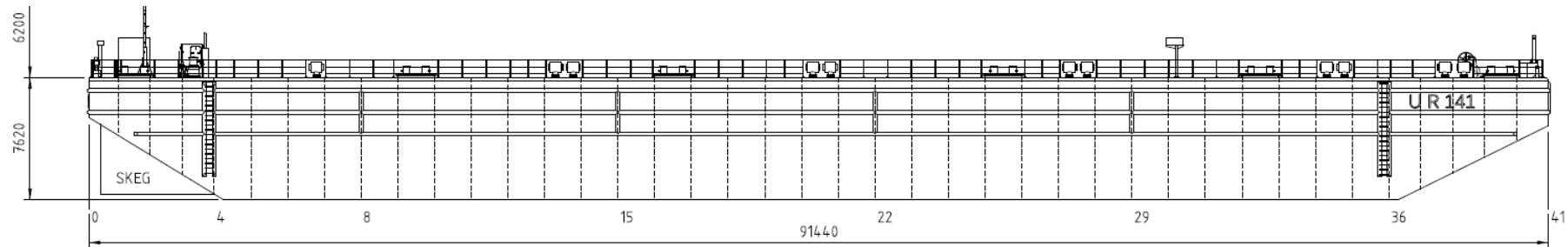
Mooring/ Towing/ Fendering Arrangement

Towing Arr.	Chain/Wire bridle with Triangle Plate, Manual Retriever Winch and Smit Bracket SWL 100T
Emergency Arr.	Chain/Wire with 110m pick up line and buoy SWL 100T
Fendering	3 tiers of horizontal steel fenders each side 2 tiers fore and aft 2 fendered ship side steel ladders each side
Bollards	On Deck (12 pcs. - 25T SWL)
Capstan	2x Hydraulic Capstans (10T Capacity)

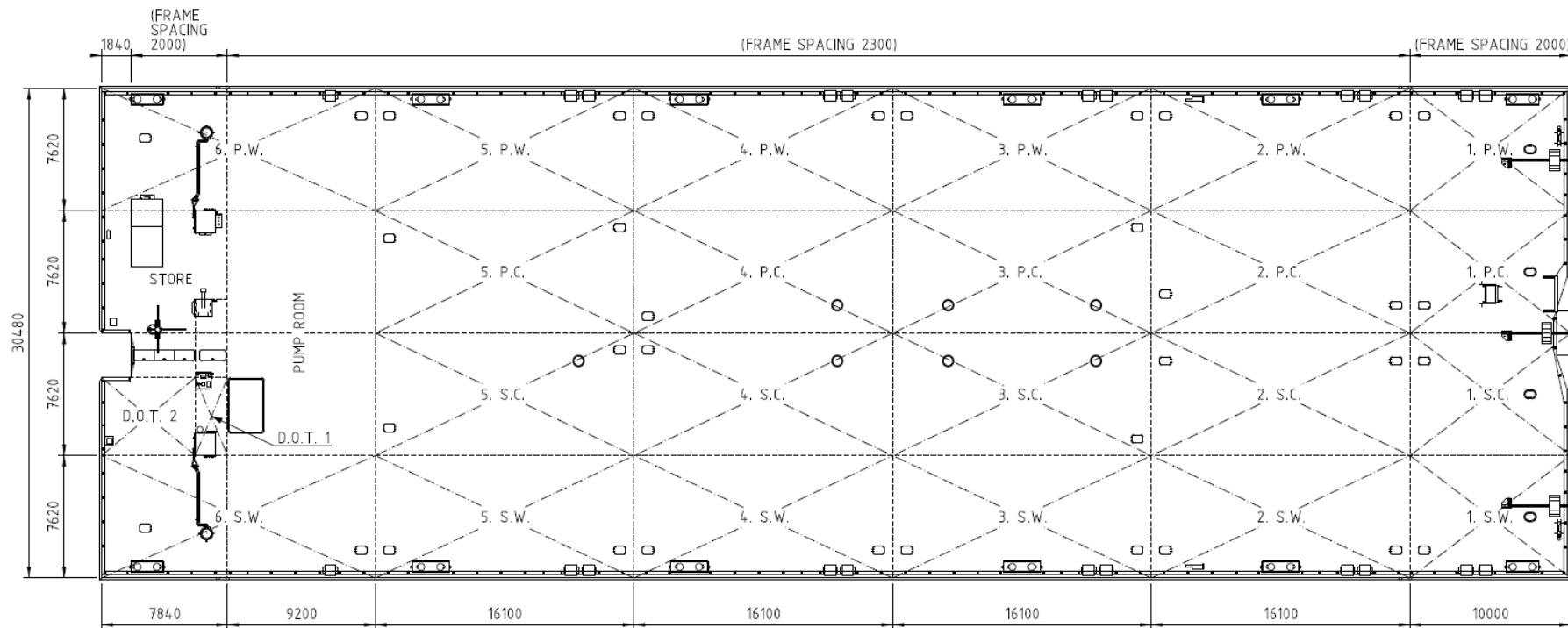
Equipment

Ballast Pumps (Diesel Driven)	2x 1000 m ³ /h
Ballast Tanks	22
Ballast Water Treatment System	Filtration + UV (1500 m ³ /h)
Alternator	1x 284 kW, Diesel Driven Engine
Auxiliaries	2x Air Cooled Diesel Engines 1x Water Cooled Engine
Anchor	<i>For Emergency Only</i> 1 Pool Anchor (5515 kg)
Anchor Wire	610 m, dia. 40 mm
Anchor Winch	1x Hydraulic Mooring Winch
Lights	Gas Burning Navigation Lights Electric Lights in Pump Room
Shore Connection	2x220V Intake for Light, Heater and Battery Chargers
Ventilation	2x Electric Ventilation Fans in Pump Room
Sounding System	Air-Sounding System for 22 Ballast Tanks and Barge Draught





SIDE VIEW



PLAN VIEW