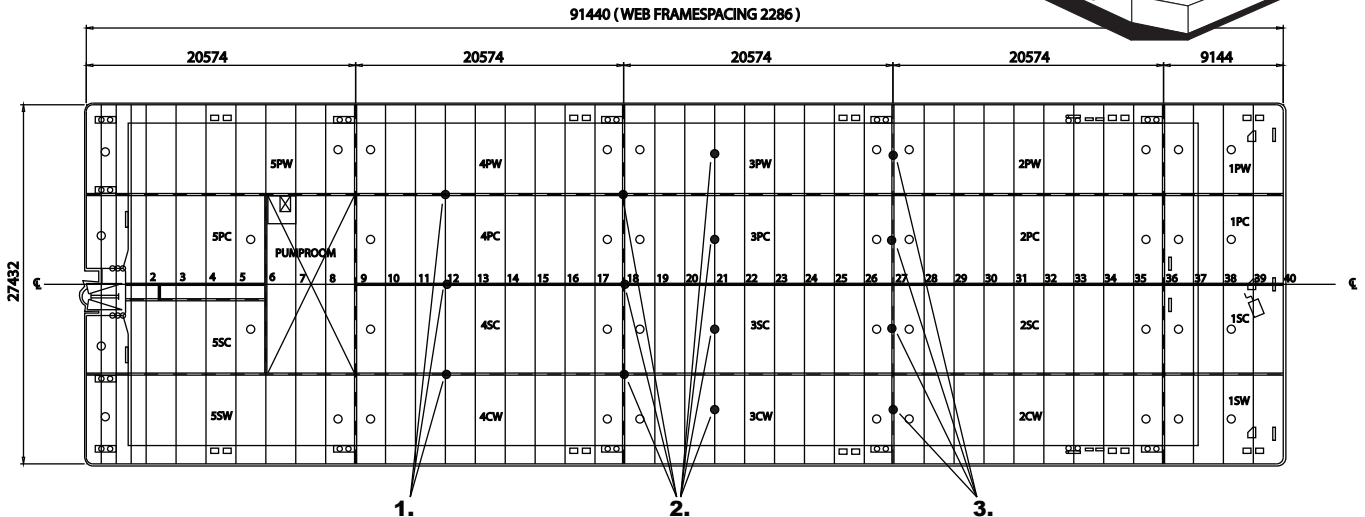
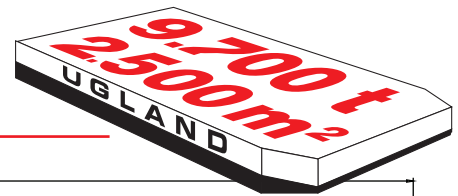
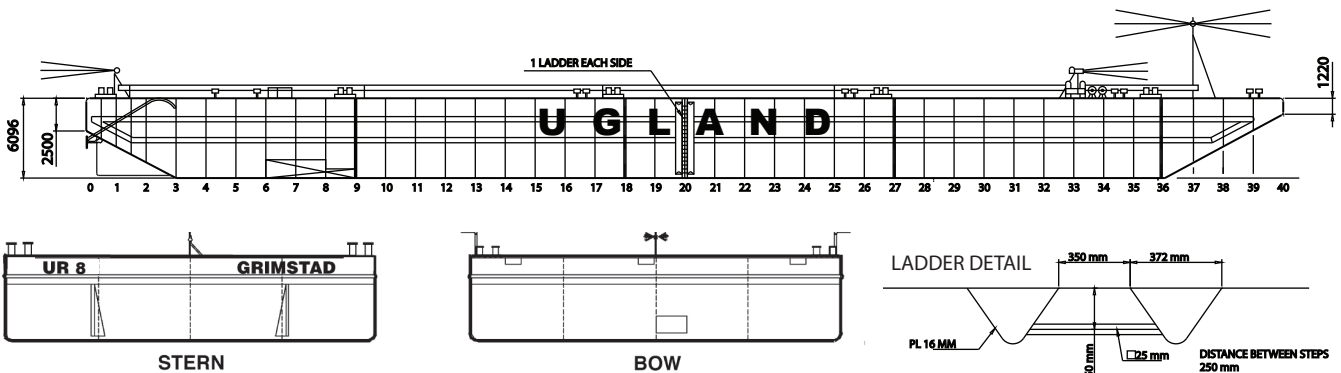


# UR 8



- 1. Intersections of longitudinal bulkheads and transverse frames 260 tonnes
- 2. Intersections of longitudinal and transverse bulkheads, and anywhere on transverse frames 200 tonnes
- 3. Any stiffeners of transverse bulkheads 130 tonnes



**Built:** 1999 by Sevmash Yard, Severodvinsk (Russia)  
**Class:** Loyd's Register +100A1  
**Signal letters:** LK6684  
**Register tonnage:** 4068 gross. / 1220 net.

**DIMENSIONS:**  
**Length overall:** 300' 91,440 m  
**Breadth:** 90' 27,432 m  
**Depth:** 20' 6,096 m  
**Light Draft, mid ship:** 0,862 m  
**Loaded draft:** 4,842 m

**CAPACITIES:**  
**Deadweight:** 9764 tonnes  
**Lightship:** 1850 tonnes  
**Deck area:** 2508 sq.m  
**Deck unit load:** 25 tonnes/sq.m

**ARRANGEMENT AND FORM:**  
**Bulkheads:** 3 longitudinal, 4 transverse + pump room bulkhead.  
**Double bottom:** In pump room.  
**Ballast tanks:** 20  
**Bow:** Raked.  
**Stern:** Raked with two skegs.

**EQUIPMENT:**  
**Auxiliaries/pumps:** 2 x Mitsubitshi 72Kwh at 1800 RPM  
 2 x Ballast pumps, Pumptechnik 800m3/h  
**Alternator/generators:** Two Busck 10 kw/3x400v/50Hz.  
**Lightening:** 2x24 volt/115 Ah  
 Solar powered navigation lights.

**MOORING / TOWING:**  
**Anchor winch:** Brattvaag/Hagglund hydraulic winch  
 18 tons pull / 1000 meter wire 32 mm ,  
 with breaking load 704 kN  
**Anchor:** Type Stockless, weight 6300 kg  
**FOR EMERGENCY ONLY**  
**Retriever Winch:** Tenwolde hand driven winch:  
**Pull power:** 10 tonnes  
**Holding power:** 15 tonnes  
**Towing arr.:** Smit towing arrangement for main-  
 and emergency towing, SWL 100 tonnes.  
**Towing bridle:** Chain /wire with triangel plate,  
 SWL 100 tonnes.  
**Bollards:** Positioned on deck.  
**Fenders:** 2 tiers of horizontal steel fenders on  
 each side.  
 2 double tiers of vertical steel fenders  
 on each side.