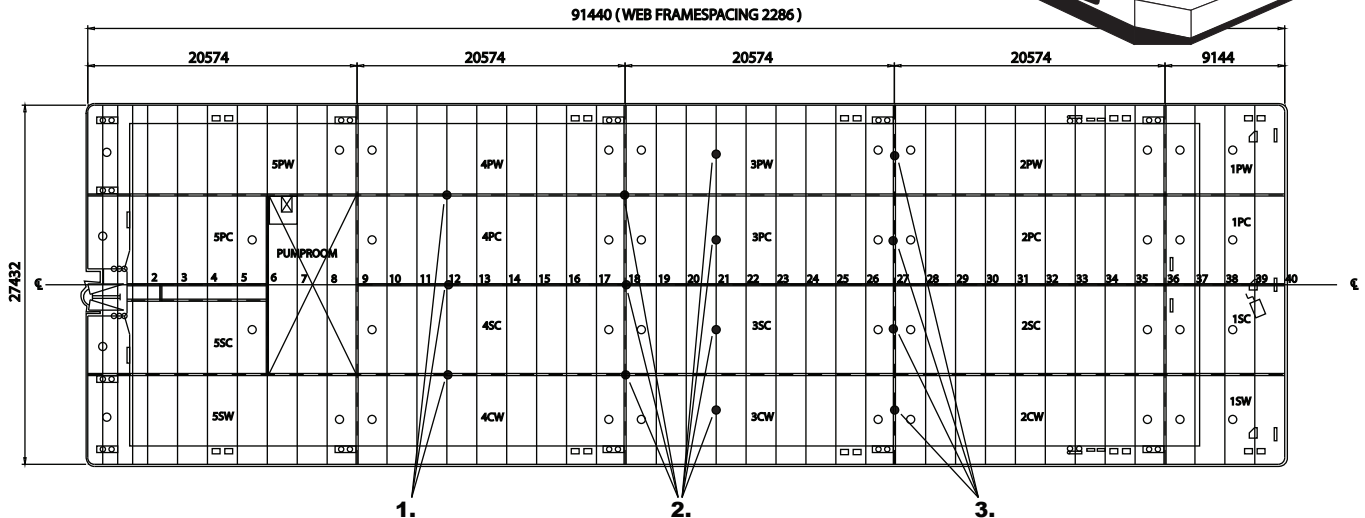
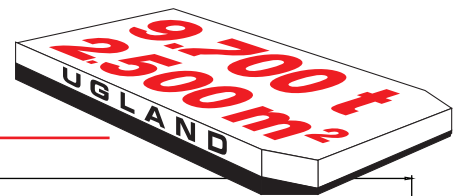
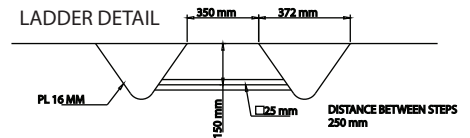
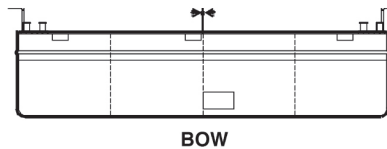
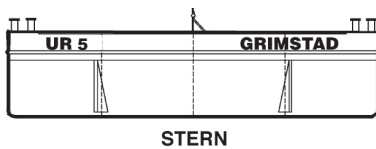
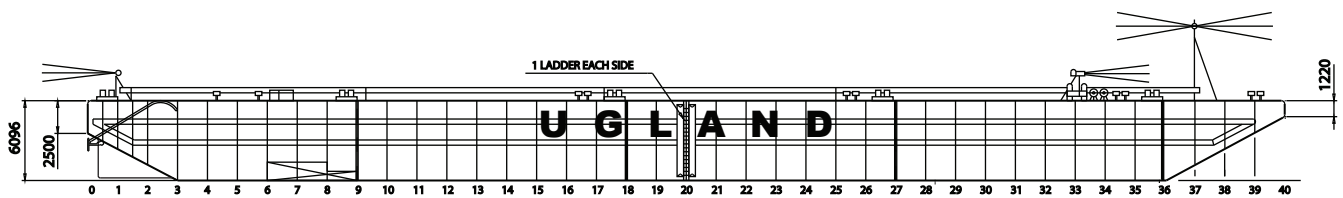


# UR 5



1. Intersections of longitudinal bulkheads and transverse frames 200 tonnes
2. Intersections of longitudinal and transverse bulkheads, and anywhere on transverse frames 160 tonnes
3. Any stiffeners of transverse bulkheads 100 tonnes



**Built:** 1996 by Sevmash Yard, Severodvinsk (Russia)  
**Class:** Loyd's Register +100A1  
**Signal letters:** LK5931  
**Register tonnage:** 4066 gross. / 1219 net.

**DIMENSIONS:**  
**Length overall:** 300' 91,440 m  
**Breadth:** 90' 27,432 m  
**Depth:** 20' 6,096 m  
**Light Draft, mid ship:** 0,839 m  
**Loaded draft:** 4,842 m

**CAPACITIES:**  
**Deadweight:** 9737 tonnes  
**Lightship:** 1850 tonnes  
**Deck area:** 2508 sq.m  
**Deck unit load:** 25 tonnes/sq.m

**ARRANGEMENT AND FORM:**  
**Bulkheads:** 3 longitudinal, 4 transverse + pump room bulkhead.  
**Double bottom:** In pump room.  
**Ballast tanks:** 20  
**Bow:** Raked.  
**Stern:** Raked with two skegs.

**EQUIPMENT:**

**Auxiliaries/ pumps:** SB. side John Deere 79 Kwh at 1800 RPM  
P. side Mitsubishi 72 Kwh at 1800 RPM  
2 Ballast pumps Pumpeteknik 600m<sup>3</sup>/h  
**Alternator/ generator :** One Busck 10 kw/3x400v/50Hz.  
**Lightening:** 2x24 volt/115 Ah  
Solar powered navigation lights.

**MOORING / TOWING:**

**Anchor winch:** Brattvaag/Hagglund hydraulic winch  
18 tons pull / 1000 meter wire 32 mm ,  
with breaking load 704 kN  
**Anchor:** Type Stockless, weight 6300 kg  
**FOR EMERGENCY ONLY**  
**Retriever Winch:** Tenwolde hand driven winch:  
Pull power: 10 tonnes  
Holding power: 15 tonnes  
**Towing arr.:** Smit towing arrangement for main-  
and emergency towing, SWL 100 tonnes.  
**Towing bridle:** Chain /wire with triangel plate,  
SWL 100 tonnes.  
**Bollards:** Positioned on deck.  
**Fenders:** 2 tiers of horizontal steel fenders on  
each side.  
2 double tiers of vertical steel fenders  
on each side.