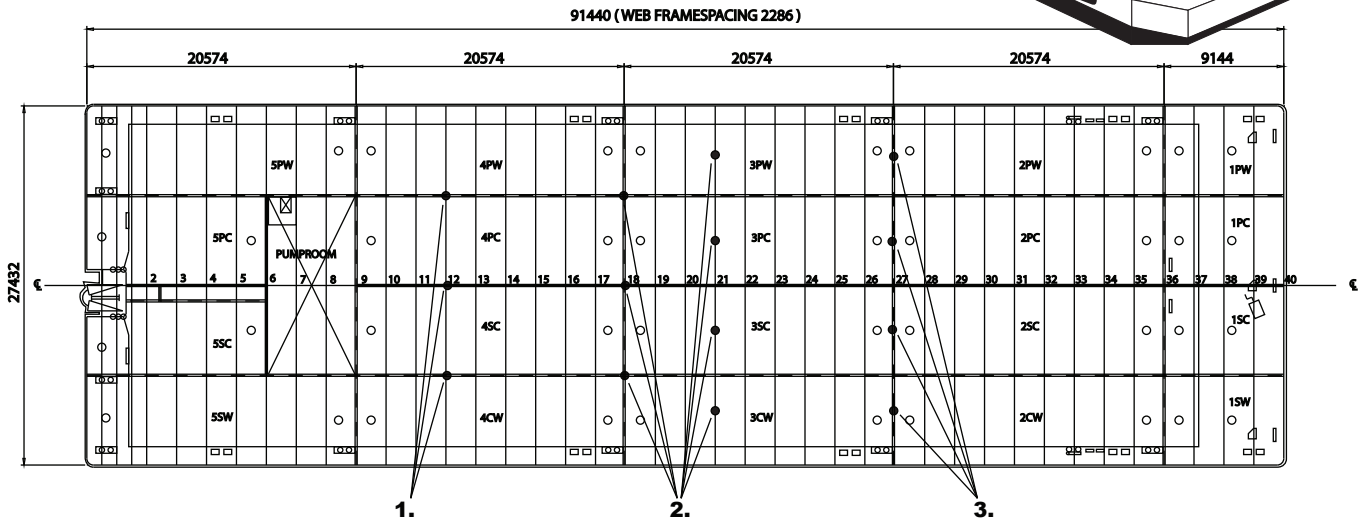
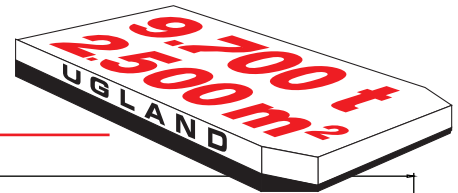
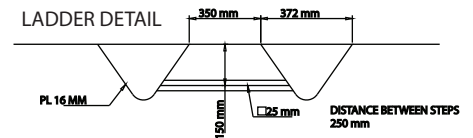
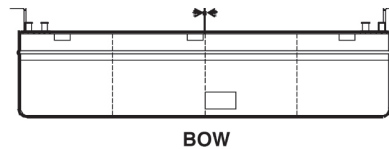
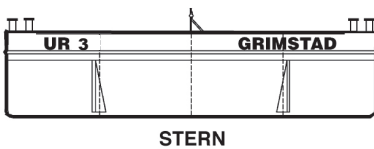
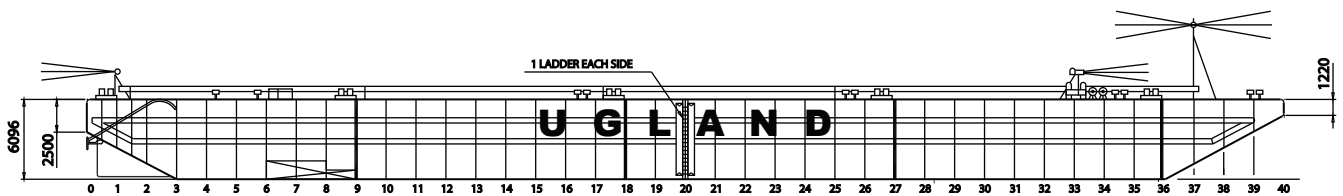


UR 3



- 1. Intersections of longitudinal bulkheads and transverse frames 200 tonnes
- 2. Intersections of longitudinal and transverse bulkheads, and anywhere on transverse frames 160 tonnes
- 3. Any stiffeners of transverse bulkheads 100 tonnes



Built: 1995 by Sevmash Yard, Severodvinsk (Russia)
Class: Loyd's Register +100A1
Signal letters: LK5665
Register tonnage: 4066 gross. / 1219 net.

DIMENSIONS:
Length overall: 300' 91,440 m
Breadth: 90' 27,432 m
Depth: 20' 6,096 m
Light Draft, mid ship: 0,835 m
Loaded draft: 4,842 m

CAPACITIES:
Deadweight: 9747 tonnes
Lightship: 1850 tonnes
Deck area: 2508 sq.m
Deck unit load: 25 tonnes/sq.m

ARRANGEMENT AND FORM:
Bulkheads: 3 longitudinal, 4 transverse + pump room bulkhead.
Double bottom: In pump room.
Ballast tanks: 20
Bow: Raked.
Stern: Raked with two skegs.

EQUIPMENT:

Auxiliaries/ pumps: SB. side John Deere 79 Kwh at 1800 RPM
P. side Mitsubishi 72 Kwh at 1800 RPM
2 Ballast pumps Pumpeteknik 600m³/h
Alternator/ generator : One Busck 10 kw/3x400v/50Hz.
Lightening: 2x24 volt/115 Ah
Solar powered navigation lights.

MOORING / TOWING:

Anchor winch: Brattvaag/Hagglund hydraulic winch
18 tons pull / 1000 meter wire 32 mm ,
with breaking load 704 kN
Anchor: Type Stockless, weight 6300 kg
FOR EMERGENCY ONLY
Retriever Winch: Tenwolde hand driven winch:
Pull power: 10 tonnes
Holding power: 15 tonnes
Towing arr.: Smit towing arrangement for main-
and emergency towing, SWL 100 tonnes.
Towing bridle: Chain /wire with triangel plate,
SWL 100 tonnes.
Bollards: Positioned on deck.
Fenders: 2 tiers of horizontal steel fenders on
each side.
2 double tiers of vertical steel fenders
on each side.