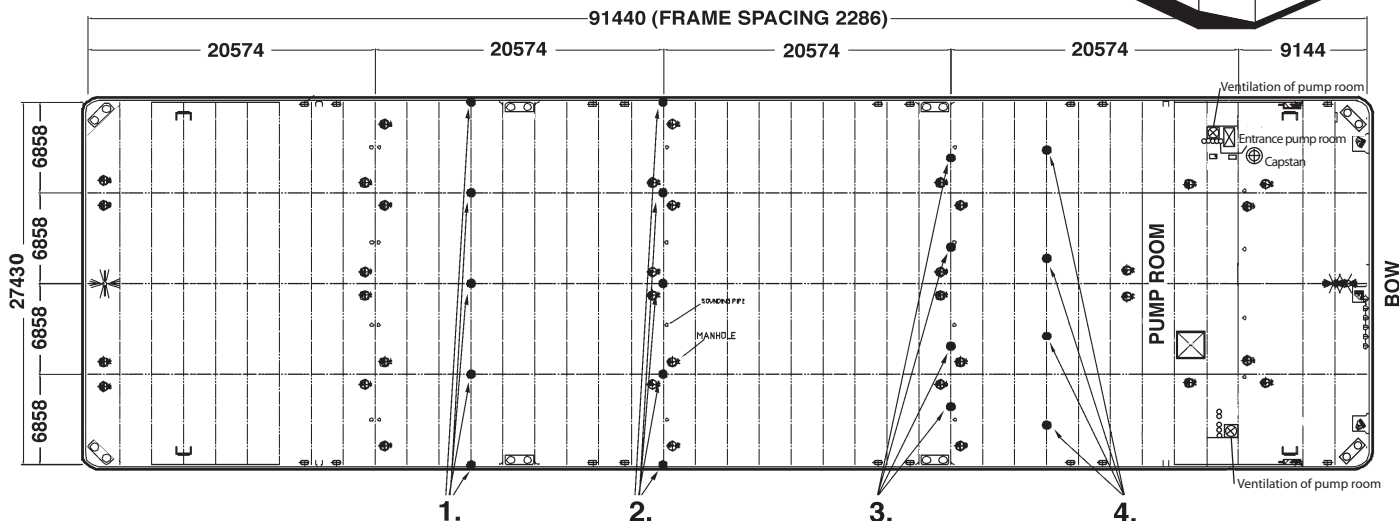
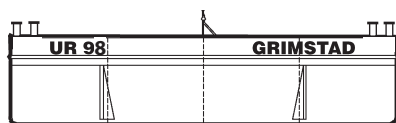
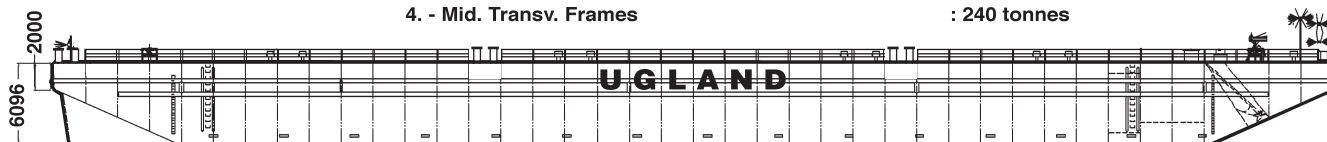


# UR 98/UR 99

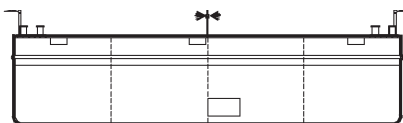


### POINT LOAD CAPACITY IN FOLLOWING CROSSING POINTS

- 1. - Long. Bulkheads/Sideshell and Transv. Frames : 700 tonnes
- 2. - Long. Bulkheads/Sideshell and Transv. Bulkheads : 200 tonnes
- 3. - Mid. Transv. Bulkheads : 100 tonnes
- 4. - Mid. Transv. Frames : 240 tonnes



STERN



BOW

Built: 2011 by Dalian Shipyard  
 Class: Det Norske Veritas (DnV) + 1A1  
 Signal letters: UR98: LG5344 / UR99: LG5345  
 Reg. tonnage: 4046 gross. / 1213 net.

#### DIMENSIONS:

Length overall: 300' 91,440 m  
 Breadth: 90' 27,430 m  
 Depth: 20' 6,096 m  
 Light Draft: Fwd.: UR98: 1,200m/UR99: 1,214m  
 Aft.: UR98: 0,885m/UR99: 0,867m  
 Loaded draft: UR98: 4,84m/ UR99: 4,84m

#### CAPACITIES:

Deadweight: UR98: 9211 tonnes/UR99: 9211 tonnes  
 Lightship: UR98: 2254,5 tonnes/UR99: 2250 tonnes  
 Deck area: 2508 sq.m  
 Deck unit load: 25 tonnes/sq.m

#### ARRANGEMENT AND FORM:

Bulkheads: 3 longitudinal, 4 transverse + pump room bulkhead.  
 Double bottom: In pump room.  
 Ballast tanks: 20  
 Bow: Raked.  
 Stern: Raked with two skegs.

#### EQUIPMENT:

Auxiliaries: Three water cooled John Deere diesel engines, Model HLBP 53 53kW at 1500 rpm.  
 Alternator: Stamford, Type VCM274C13 400v, 68,8 kva, 1500 rpm.  
 Lightening: El. light in pump room/Shore connection and battery charger  
 Gas burning navigation lights.  
 Ballast pumps: Two centrifugal pumps, 600 cub.m./hour, each.  
 Anchor winch: Hydraulic mooring winch. Maker: Dalian Shipyard Tools Industry Co.

#### MOORING / TOWING:

Anchor: 1 anchor, Spek M-type, 4000 kg (FOR EMERGENCY ONLY)  
 Anchor wire: 610 m, dia. 38 mm.  
 Towing arr.: Smit towing arrangement for main- and emergency towing, SWL 85 tonnes.  
 Towing bridle: Chain /wire with triangel plate, SWL 85 tonnes.  
 Bollards: Positioned on deck.  
 Fenders: 2 tiers of horizontal steel fenders on each side.  
 2 double tiers of vertical steel fenders on each side.