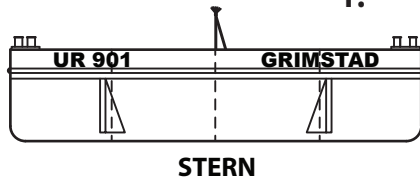
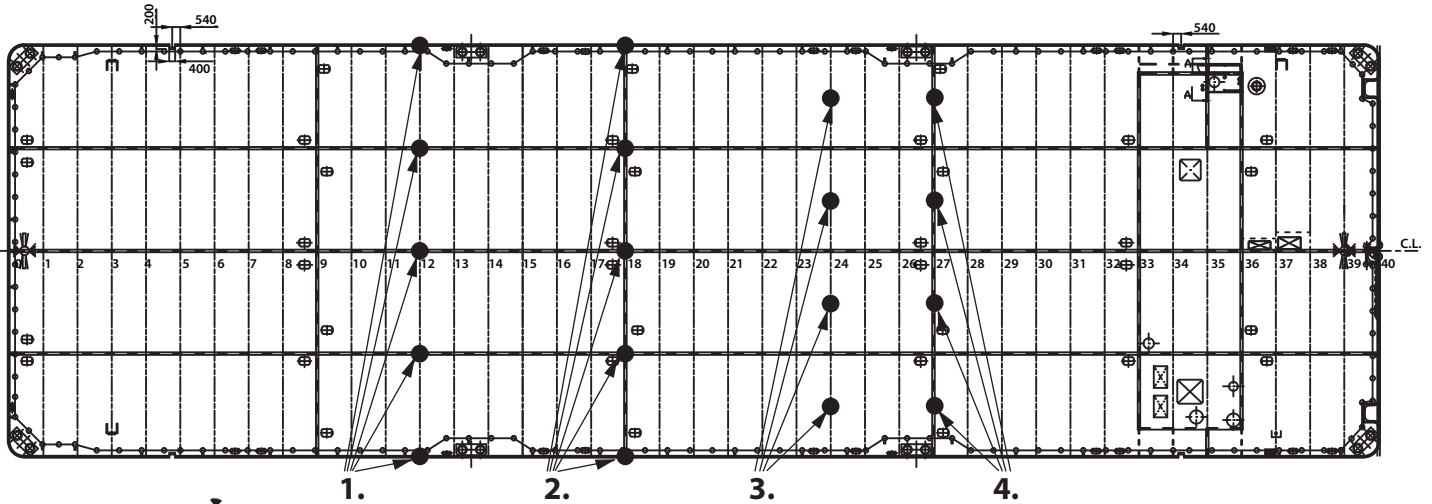
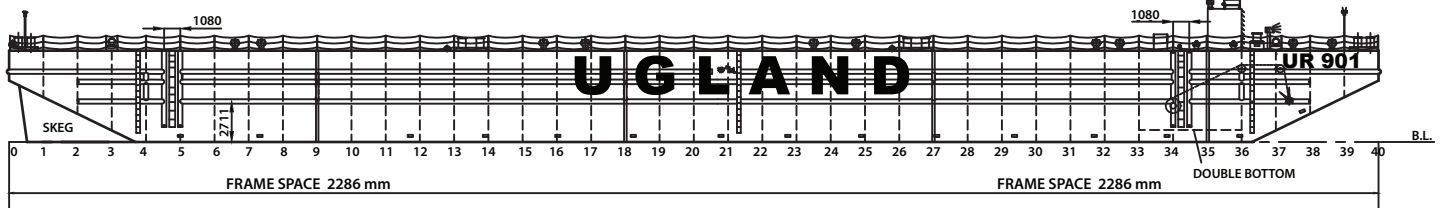
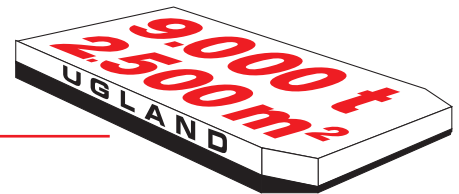


UR 901/UR 902



POINT LOAD CAPACITY IN FOLLOWING CROSSING POINTS:

- 1. - Point load – Long. Bulkhead/Side Shell and Transverse Frames: 700t
- 2. - Point load – Long. Bulkhead/Side Shell and Transverse Bulkheads: 200t
- 3. - Point load – Mid on Transverse Frames: 240t
- 4. - Point load – Mid on Transverse Bulkheads: 100t

Built: 2013 by Dalian Shipyard
 Class: Det Norske Veritas (DnV) + 1A1
 Signal letters: UR901: LG7251 / UR 902: LG7252
 Reg. tonnage: 4065 t gross. / 1220 t net.

DIMENSIONS:

Length overall: 300' 91,440 m
 Breadth: 90' 27,430 m
 Depth: 20' 6,096 m
 Light Draft: Fwd.: 1,337 m Aft.: 0,913 m
 Loaded Draft: 4,84 m

CAPACITIES:

Deadweight: 9019 tonnes
 Lightship: 2457 tonnes
 Deck area: 2508 sq.m
 Deck unit load: 30 t/sq.m

ARRANGEMENT AND FORM:

Bulkheads: 3 longitudinal, 4 transverse + pump room bulkhead.
 Double bottom: In pump room.
 Ballast tanks: 20
 Bow: Raked.
 Stern: Raked with two skegs.

EQUIPMENT:

Auxiliaries: 2 off Scania DI 12 62M, 315 KW, 1500 RPM.
 Alternator: 2 off Mecc Alte, type ECO40-1S/4 Form B3/400V, 505A, 50 HZ, 350 KVA
 Ballast pumps: 2 off electrical driven centrifugal ballast pumps, 600 cub.m./hour, each.
 Ballast valves: Kockum Sonics ballast remote reading system.
 Ballast Water Treatment: Optimarin As, 2 units, each capacity 668 m³/hr
 Ballast Water uptake: Filtration/UV Treatment
 Ballast Water discharge: UV Treatment.
 Lightening: El. light in pump room/Shore connection and battery charger
 Solar powered navigation lights.
 Anchor winch: Hydraulic mooring winch. Maker: Dalian Shipyard Tools Industry Co.

MOORING / TOWING:

Anchor: 1 anchor, SPEK 95, 4050 kg (FOR EMERGENCY ONLY)
 Anchor wire: 610 m, dia. 38 mm.
 Towing arr.: Smit towing arrangement for main and emergency towing, SWL 85 tonnes.
 Towing bridle: Chain /wire with triangel plate, SWL 85 tonnes.
 Bollards: 8 off, capacity 50 t SWL.
 Fenders: 3 tiers of horizontal steel fenders on each side.
 2 double tiers of vertical steel fenders on each side on each side of ladders.
 5 vertical steel fenders on each side.