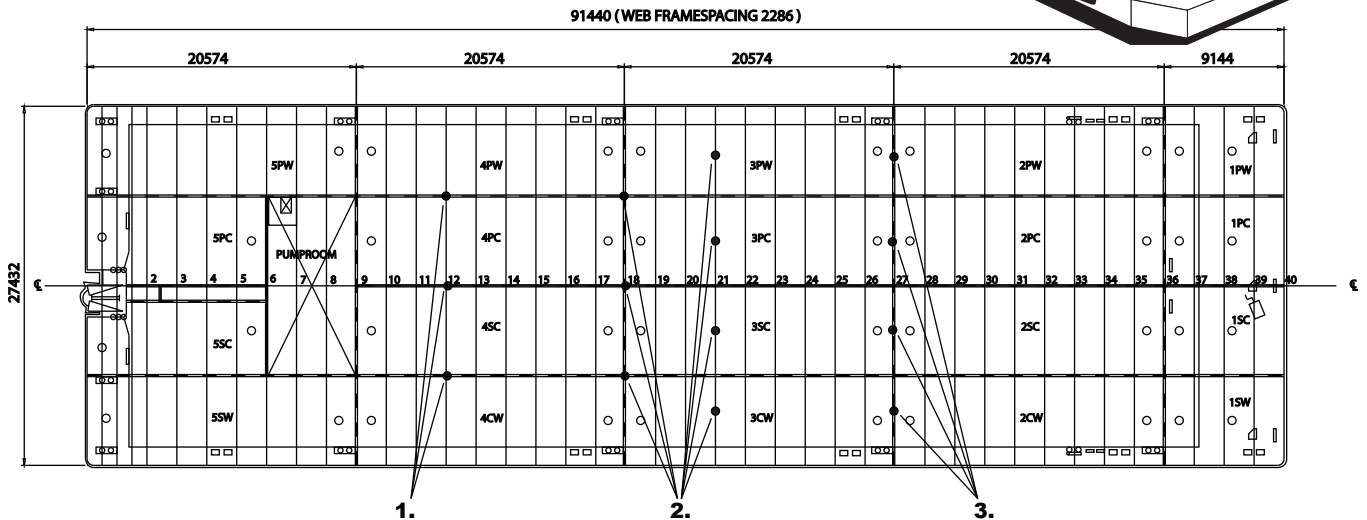
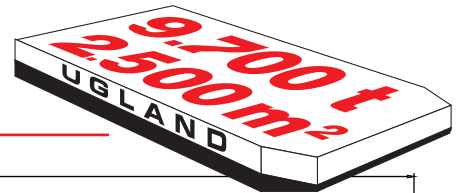
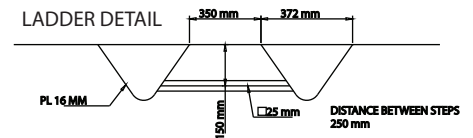
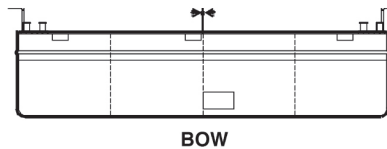
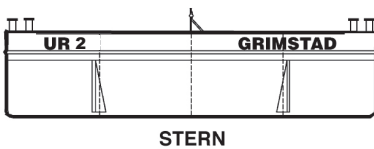
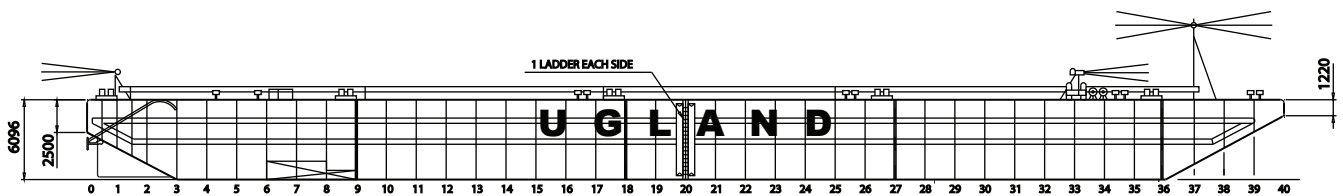


# UR 2



- 1. Intersections of longitudinal bulkheads and transverse frames 200 tonnes
- 2. Intersections of longitudinal and transverse bulkheads, and anywhere on transverse frames 160 tonnes
- 3. Any stiffeners of transverse bulkheads 100 tonnes



Built: 1995 by Sevmash Yard, Severodvinsk (Russia)  
 Class: Loyd's Register +100A1  
 Signal letters: LK5437  
 Register tonnage: 4066 gross. / 1219 net.

**DIMENSIONS:**  
 Length overall: 300' 91,440 m  
 Breadth: 90' 27,432 m  
 Depth: 20' 6,096 m  
 Light Draft, mid ship: 0,837 m  
 Loaded draft: 4,842 m

**CAPACITIES:**  
 Deadweight: 9742 tonnes  
 Lightship: 1850 tonnes  
 Deck area: 2508 sq.m  
 Deck unit load: 25 tonnes/sq.m

**ARRANGEMENT AND FORM:**  
 Bulkheads: 3 longitudinal, 4 transverse + pump room bulkhead.  
 Double bottom: In pump room.  
 Ballast tanks: 20  
 Bow: Raked.  
 Stern: Raked with two skegs.

**EQUIPMENT:**

Auxiliaries/pumps: SB. side John Deere 79 Kwh at 1800 RPM  
 P. side Mitsubishi 72 Kwh at 1800 RPM  
 2 Ballast pumps Pumpeteknik 600m<sup>3</sup>/h  
 Alternator/generator: One Busck 10 kw/3x400v/50Hz.  
 Lightening: 2x24 volt/115 Ah  
 Solar powered navigation lights.

**MOORING / TOWING:**

Anchor winch: Brattvaag/Hagglund hydraulic winch  
 18 tons pull / 1000 meter wire 32 mm ,  
 with breaking load 704 kN  
 Anchor: Type Stockless, weight 6300 kg  
**FOR EMERGENCY ONLY**  
 Retriever Winch: Tenwolde hand driven winch:  
 Pull power: 10 tonnes  
 Holding power: 15 tonnes  
 Towing arr.: Smit towing arrangement for main-  
 and emergency towing, SWL 100 tonnes.  
 Towing bridle: Chain /wire with triangel plate,  
 SWL 100 tonnes.  
 Bollards: Positioned on deck.  
 Fenders: 2 tiers of horizontal steel fenders on  
 each side.  
 2 double tiers of vertical steel fenders  
 on each side.